

MICROINVERTER

EVT300

Connected to one single panel.

Peak Output Power: 330W



MICROINVERTER

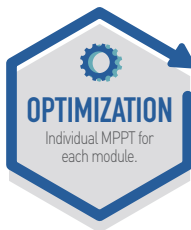
EVT560

Connected to two panels.

Peak Output Power: 600W



Dynamic network support Reactive/Active power control



DATASHEET

Model	EVT300	EVT560
Input Data (DC)		
Recommended Input Power Range(STC)	180W - 420W+	(180W - 400W+) *2
Max. DC Input (V)	54V	54V
Max. Input Short-circuit Current (A)	15A	15A
Operating Range (V)	18V-54V	18V-54V
Max. Input Continuous Current (A)	12A	12A*2
MPPT Voltage Range (V)	24V-45V	24V-45V
Output Data (AC)		
Normal Voltage (Vac)	220V/230V	220V/230V
Current (Max.continuous) (A)	1.36A	2.54A
Frequency (Hz)	50Hz/60Hz	50Hz/60Hz
Power (Max.continuous) (W)	300W	560W
Peak Power (W)	330W	600W
Power Factor Range	+/-0.95	+/-0.95
Total Harmonic Distortion	<3%	<3%
Maximum Units Per Branch	20 Units	10 Units (12AWG Cable)

Efficiency		
Peak Inverter Efficiency	95.4%	95.6%
EURO Weighted Efficiency	95%	95%
MPPT Efficiency	99.9%	99.9%
Nighttime Power Consumption	<100mW	<100mW

Features	
Communication	PLCC(Power Line Communication)
Compliance	VDE-AR-N 4105, IEC/EN61000, IEC/EN62109-1/2, EN50549-1/2019, TOR 2019, C10/11:2019, UTE C15-712-1:2013, VFR 2019
Lifetime	25 Years

Others		
Ingress Protection (IP)	IP 67	
Protective Class	Class I	
Temperature (°C)	-40°C to +65°C	
Relative Humidity	0% - 98%	
Overvoltage Category	OVC III (AC Main), OVC II (PV)	
Inverter Isolation	<input type="checkbox"/> Non-isolated <input checked="" type="checkbox"/> High Frequency Isolated	
Weight	1.8kg	2.8kg
Dimensions	163mm*216mm*27mm	248mm*236mm*27.5mm

MONITORING DEVICE

EVB202

Communication gateway for Envertech microinverters.



PLUG & PLAY

Fast installation.



SMART

Online smart monitoring and management of Envertech PV system.



PLCC

Powerline communication ensures stability and reliability.

Model

EVB202

Interface

PLCC	Envertech Proprietary
LCD	LCD Screen
Ethernet	RJ45

Capacity

Numbers of Devices Connected	Monitor Up to 20 Units of EVT560 (or 40 Units of EVT300)
------------------------------	--

Power Requirements

AC Supply	220V/230V/240V; 50Hz/60Hz
Power Consumption	3W

Mechanical Data

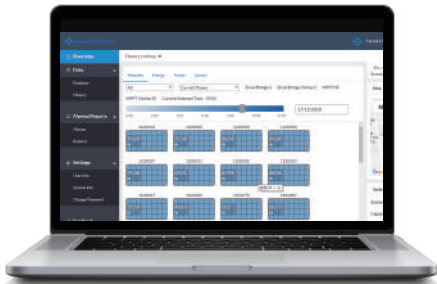
Dimensions	225mm*50mm*107mm
Weight	700g
Cooling	Natural Convection- No Fans
Ambient Temperature Range	-40 C to +65 C
Ingress Protection (IP)	IP 65

Features

Compliance	CE
Warranty	5 Years

SMART MONITORING SYSTEM

EnverPortal



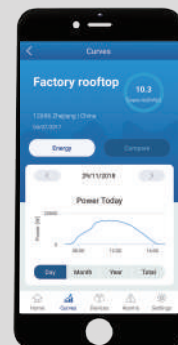
- ✔ Comprehensive data display and analysis for the whole system and each panel.
- ✔ Both realtime and daily, monthly, yearly data available.
- ✔ Problem detection at module level for easy maintenance.



EnverView



A fast convenient monitoring and management of your system's performance right in your palms.



www.envertec.com