

# Envertech EVB300 Quick Installation Guide

With the latest firmware version (EVB300-E-N-003-14), the local mode is available on EVB300. The following will show how to use.

## 1. Components

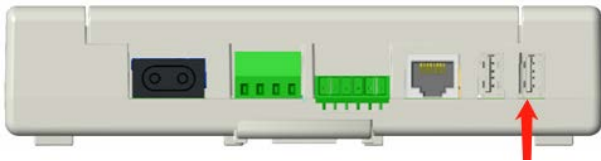
To use the local mode on EVB300, the following components should be prepared:

- EVB300 (Firmware version EVB-300-E-N-003-014 or higher)
- A USB flash drive with the sufficient storage space (format: FAT16/32 or exFAT)

## 2. Operating steps

Insert the USB flash drive into the USB socket on EVB300.

**Note:** Insert the USB flash drive into the USB socket on EVB300 as shown on the following picture. Otherwise, the USB flash drive cannot be recognized.

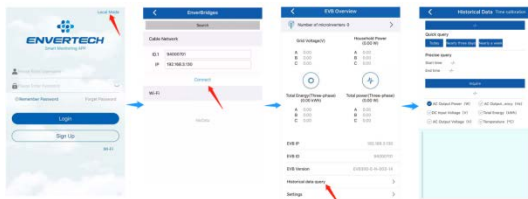


## 3. Installation

Once USB flash drive has been installed, the data will be recorded in USB flash drive automatically.

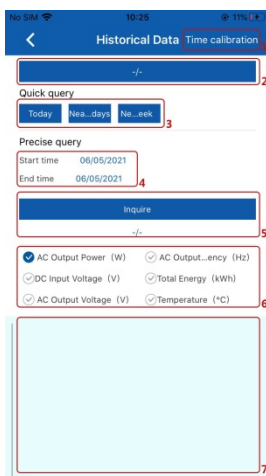
- 1) Enter the local history query interface

Open EnverView APP, click [Local Mode]>>> select the EVB300 SN >>> open monitoring interface >>> enter Local History Data Query Function. Click [Time Calibration] button before use.



- 2) Data query

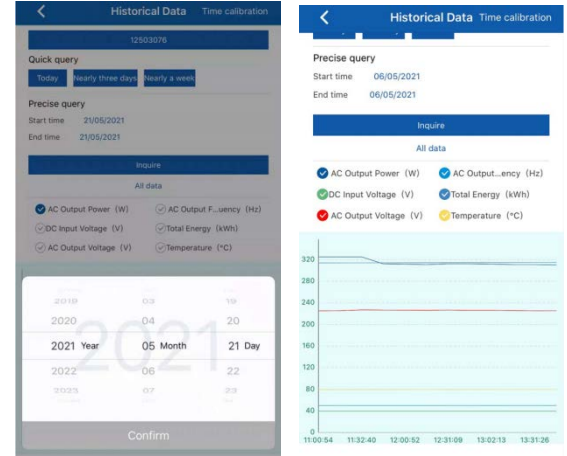
- a) Introduction to the interface



- b) **Quick Query**

There are 3 buttons: Today, Nearly three days and Nearly a week. Click and select the time range to get the detailed data.

- c) **Precise Query**  
Click and select the time range to get the detailed data.



- d) **Others**  
Click and select the microinverter SN to get the data for each microinverter.

